

1

2

3

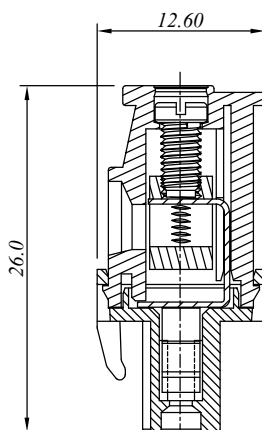
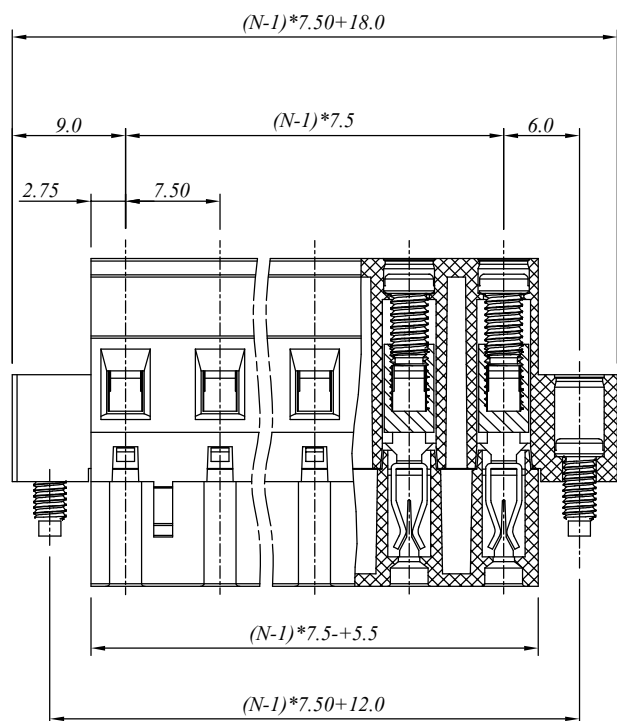
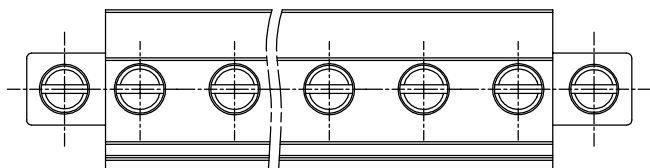
4

5

6

7

SIGN	DATE	DESCRIPTION	APPROVER
△			
△			
△			



材质于电镀/ Material

塑件/Insulator body:	PA66, UL94V-0
方块/Contact(metal housing):	Brass ,Ni plated
螺丝/Terminal screw:	M3.0, Steel Zn plated
夹子/Clamp:	Phosphor bronze, Ni plated

电器性能/ Electrical

参考标准/Standard:	UL	IEC
额定电压/Rated voltage:	300V	450V
额定电流/Rated current:	15A	20A
接触电阻/Contact resistance:	20m Ω (max)	
绝缘电阻/Insulation resistance:	500M Ω /500V	
耐电压/Withstanding voltage:	AC 2000V/1Min	
使用线径/Wire range:	14-28AWG, 2.5mm ²	

机械性能/ Mechanical

扭矩/Torque:	0.5Nm(4.5Lb.in)
温度范围/Temperature range:	-40°C to +105°C
剥线长度/Steip length:	7-8mm
瞬间温度/Max soldering:	+250°C, for 5 Sec

尺寸/Dimensions

间距/Pitch:	7.50mm
极数/Poles:	2-24P

N =Number of contacts

慈溪万海电子有限公司 CIXI WANHAI ELECTRONICS CO., LTD.

PART. NAME: 2EDGKAM-7.50-XXP

TITLE:

PART. NO.:

DWG NAME:

APPROVED BY

CHECKED BY

DESIGNED BY

DRAWN BY

CUSTOM NO.:

Tolerance

X ±0.50

X.X ±0.30

X.XX ±0.10

XX° ±1°



UNITS:mm

SCALE:1.9/1

REVISION:5

1

2

3

4

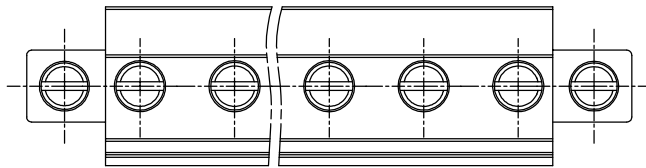
5

6

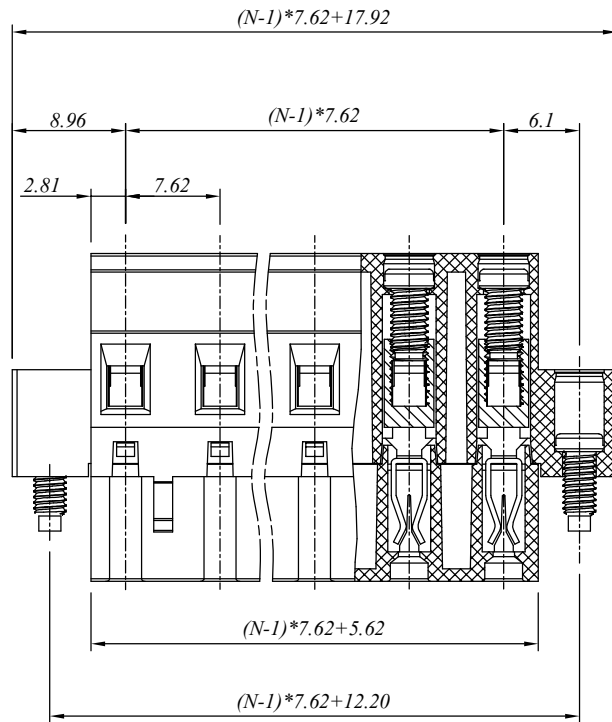
7

SIGN	DATE	DESCRIPTION	APPROVER
△			
△			
△			

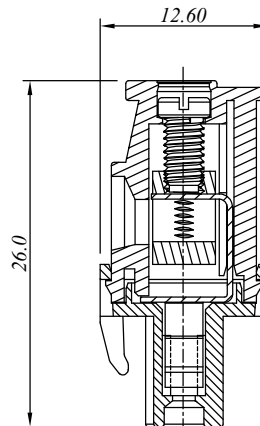
E



D



C



B

A

N=Number of contacts

材质于电镀/ Material

塑件/Insulator body: PA66, UL94V-0
 方块/Contact(metal housing): Brass ,Ni plated
 螺丝/Terminal screw: M3.0, Steel Zn plated
 夹子/Clamp: Phosphor bronze, Ni plated

电器性能/ Electrical

参考标准/Standard: UL IEC
 额定电压/Rated voltage: 300V 450V
 额定电流/Rated current: 15A 20A
 接触电阻/Contact resistance: 20m Ω (max)
 绝缘电阻/Insulation resistance: 500M Ω /500V
 耐电压/Withstanding voltage: AC 2000V/1Min
 使用线径/Wire range: 14-28AWG, 2.5mm²

机械性能/ Mechanical

扭矩/Torque: 0.5Nm(4.5Lb.in)
 温度范围/Temperature range: -40°C to +105°C
 剥线长度/Steip length: 7-8mm
 瞬间温度/Max soldering: +250°C, for 5 Sec

尺寸/Dimensions

间距/Pitch: 7.62mm
 极数/Poles: 2-24P

慈溪万海电子有限公司
CIXI WANHAI ELECTRONICS CO., LTD.

PART. NAME: 2EDGKAM-7.50-XXP				TITLE:	
PART. NO.:				DWG NAME:	
APPROVED BY	CHECKED BY	DESIGNED BY	DRAWN BY	CUSTOM NO.:	Tolerance X ±0.50 X.X ±0.30 X.XX ±0.10 XX° ±1°
				UNITS:mm SCALE:1:9/1 REVISION:B5	