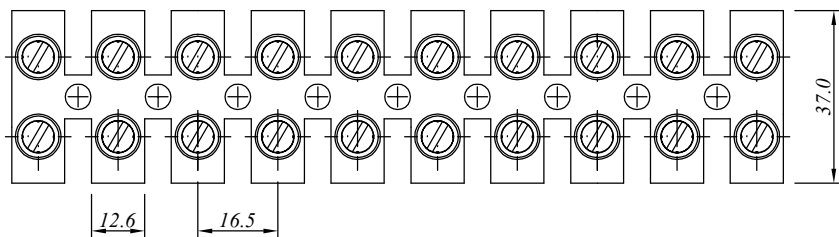
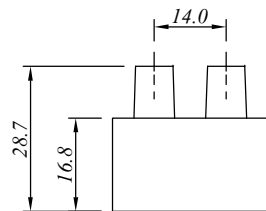
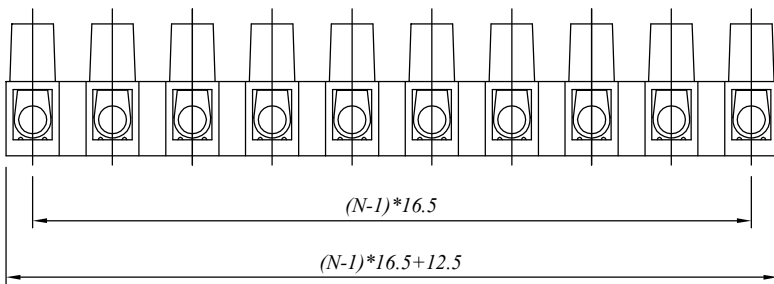


SIGN	DATE	DESCRIPTION	APPROVER
△			
△			
△			

E

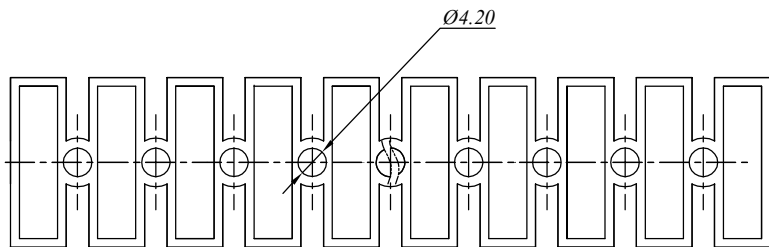


D



C

B



A

N=Number of contacts

材质与电镀/ Material

塑件/Insulator body: PA66, UL94V-0
 方块/Contact(metal housing): Brass , Ni plated
 螺丝/Terminal screw: M5, Steel Zn plated

电器性能/ Electrical

额定电压/Rated voltage: 500V
 额定电流/Rated current: 101A
 耐电压/Withstanding voltage: AC 2500V/1Min
 使用线径/Wire range: 4-12AWG, 25mm²

机械性能/ Mechanical

温度范围/Temperature range: -40°C to +120°C
 剥线长度/Steip length: 11.5mm

尺寸/Dimensions

间距/Pitch: 16.5mm
 极数/Poles: 2-12P

慈溪万海电子有限公司
CIXI WANHAI ELECTRONICS CO., LTD.

PART. NAME: PA18H-16.5				TITLE:	
PART. NO.:				DWG NAME:	
APPROVED BY	CHECKED BY	DESIGNED BY	DRAWN BY	CUSTOM NO.:	<i>Tolerance</i> x. ±0.50 x.x ±0.30 x.xx ±0.10 xx° ±1°
				UNITS: mm SCALE: 4/1 REVISION: B3	

1

2

3

4

5

6

7