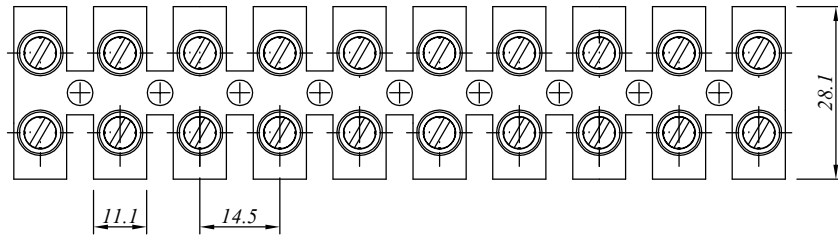
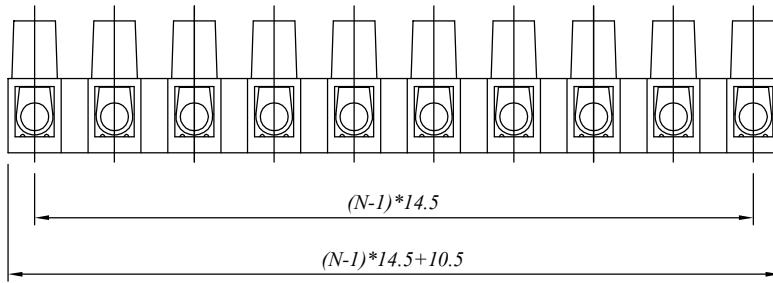


SIGN	DATE	DESCRIPTION	APPROVER
△			
△			
△			

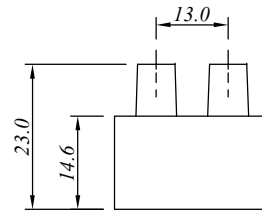
E



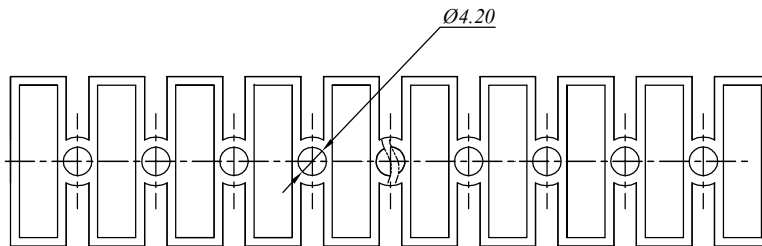
D



C



B



A

$N = \text{Number of contacts}$

#### 材质与电镀/ Material

塑件/Insulator body:

PA66, UL94V-0

方块/Contact(metal housing):

Brass , Ni plated

螺丝/Terminal screw:

M4, Steel Zn plated

#### 电器性能/ Electrical

额定电压/Rated voltage:

500V

额定电流/Rated current:

76A

耐电压/Withstanding voltage:

AC 2500V/1Min

使用线径/Wire range:

6-14AWG, 16mm<sup>2</sup>

#### 机械性能/ Mechanical

温度范围/Temperature range:

-40°C to +120°C

剥线长度/Steip length:

9mm

#### 尺寸/Dimensions

间距/Pitch:

14.5mm

极数/Poles:

2-12P

慈溪万海电子有限公司  
CIXI WANHAI ELECTRONICS CO., LTD.

PART. NAME: PA16H-14.5

TITLE:

PART. NO.:

DWG NAME:

APPROVED BY

CHECKED BY

DESIGNED BY

DRAWN BY

CUSTOM NO.:

Tolerance

x. ±0.50

x.x ±0.30

x.xx ±0.10

xx° ±1°



UNITS: mm

SCALE: 4/1

REVISION: B3

1

2

3

4

5

6

7