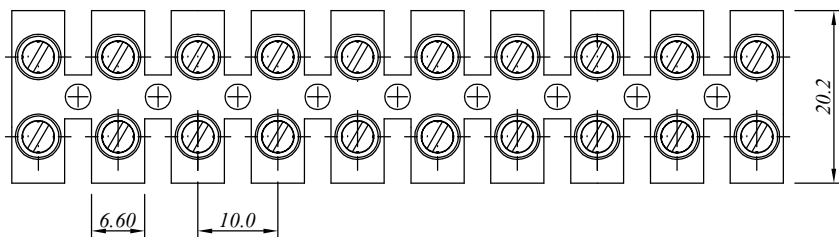
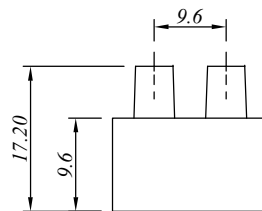
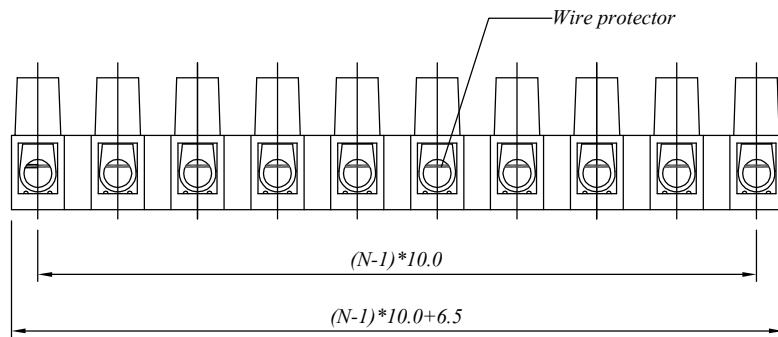


SIGN	DATE	DESCRIPTION	APPROVER
△			
△			
△			

E

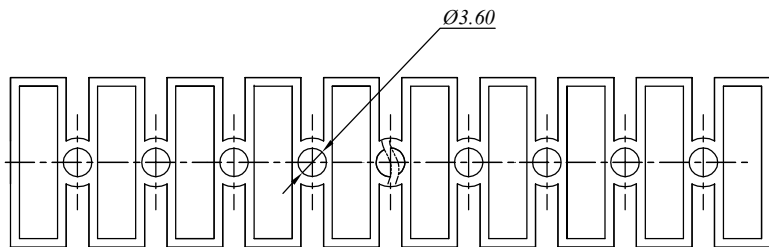


D



C

B



A

*N=Number of contacts*

**材质与电镀/ Material**

塑件/Insulator body: PA66, UL94V-0  
 方块/Contact(metal housing): Brass , Ni plated  
 螺丝/Terminal screw: M3, Steel Zn plated

**电器性能/ Electrical**

额定电压/Rated voltage: 450V  
 额定电流/Rated current: 24A  
 耐电压/Withstanding voltage: AC 2500V/1Min  
 使用线径/Wire range: 12-18AWG, 2.5mm<sup>2</sup>

**机械性能/ Mechanical**

扭矩/Torque: 3.54Lb.in  
 温度范围/Temperature range: -40°C to +120°C  
 剥线长度/Steip length: 6.5mm

**尺寸/Dimensions**

间距/Pitch: 10.0mm  
 极数/Poles: 2-12P

慈溪万海电子有限公司  
**CIXI WANHAI ELECTRONICS CO., LTD.**

PART. NAME: PA10HWP-10.0				TITLE:	
PART. NO.:				DWG NAME:	
APPROVED BY	CHECKED BY	DESIGNED BY	DRAWN BY	CUSTOM NO.:	<i>Tolerance</i> x. ±0.50 x.x ±0.30 x.xx ±0.10 xx° ±1°
				UNITS: mm SCALE: 4/1	
				REVISION: B3	

1

2

3

4

5

6

7