

1

2

3

4

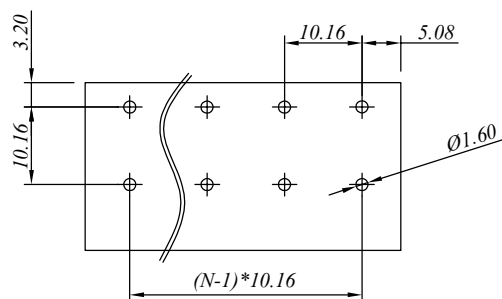
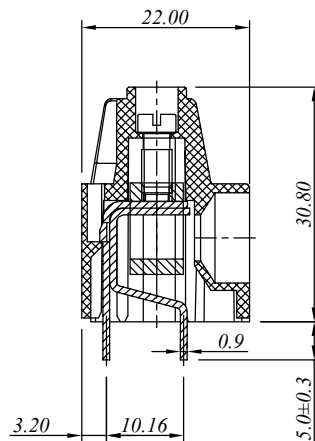
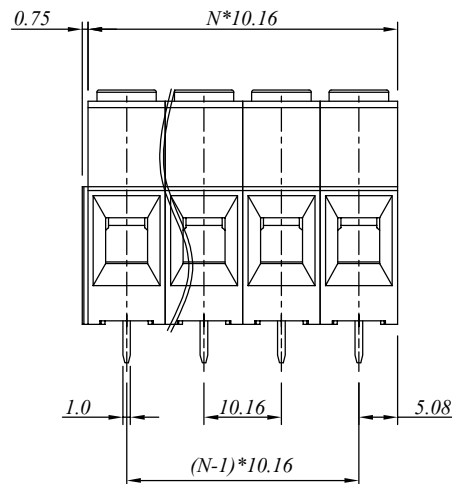
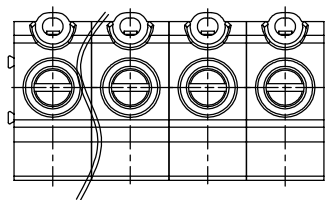
5

6

7

SIGN	DATE	DESCRIPTION	APPROVER
△			
△			
△			

P.C.B. LAYOUT



$N = \text{Number of contacts}$

材质于电镀 / Material

塑件/Insulator body:

PA66, UL94V-0

方块/Contact(metal housing):

Brass ,Ni plated

螺丝/Terminal screw:

M4.0, Steel Zn plated

焊脚/Pin header:

Copper alloy, Tin plated

电器性能 / Electrical

参考标准/Standard:

UL IEC

额定电压/Rated voltage:

300V 630V

额定电流/Rated current:

65A 76A

接触电阻/Contact resistance:

20m Ω (max)

绝缘电阻/Insulation resistance:

500M Ω /500V

耐电压/Withstanding voltage:

AC 2500V/1Min

使用线径/Wire range:

6-22AWG, 10mm²

机械性能 / Mechanical

扭矩/Torque:

1.2Nm(10.6Lb.in)

温度范围/Temperature range:

-40°C to +105°C

剥线长度/Steip length:

10-11mm

瞬间温度/Max soldering:

+250°C, for 5 Sec

尺寸 / Dimensions

间距/Pitch:

10.16mm

极数/Poles:

1-XXP

慈溪万海电子有限公司
CIXI WANHAI ELECTRONICS CO., LTD.

PART. NAME: JM136HT-10.16

TITLE:

PART. NO.:

DWG NAME:

APPROVED BY

CHECKED BY

DESIGNED BY

DRAWN BY

CUSTOM NO.:

Tolerance

x. ±0.50

x.x ±0.30

x.xx ±0.10

xx° ±1°



UNITS: mm

SCALE: 4/1

REVISION: A2