

1

2

3

4

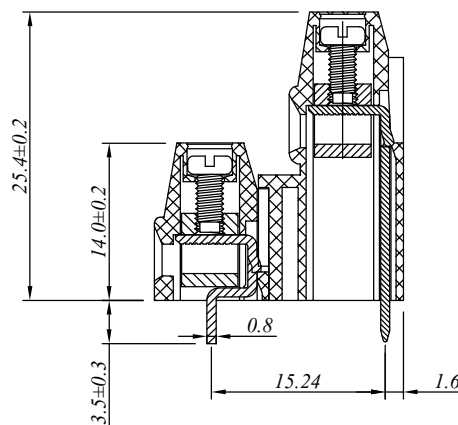
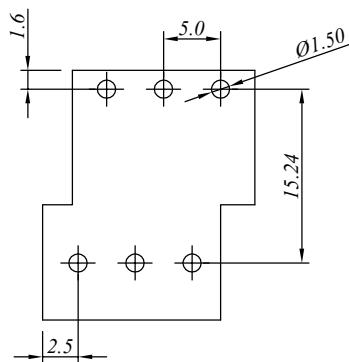
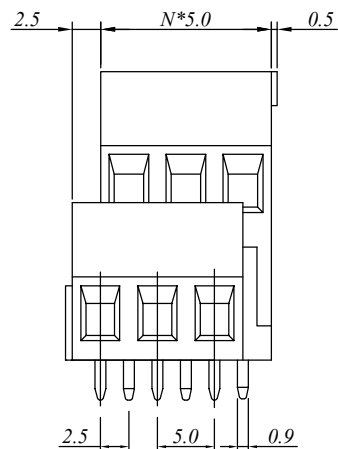
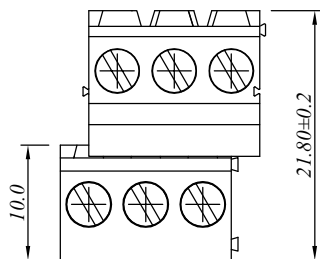
5

6

7

SIGN	DATE	DESCRIPTION	APPROVER

## P.C.B LAYOUT



### 材质于电镀/ Material

塑件/Insulator body:	PA66, UL94V-0
方块/Contact(metal housing):	Brass ,Ni plated
螺丝/Terminal screw:	M2.5, Steel Zn plated
焊脚/Pin header:	Brass, Tin plated

### 电器性能/ Electrical

参考标准/Standard:	UL	IEC
额定电压/Rated voltage:	300V	250V
额定电流/Rated current:	15A	18A
接触电阻/Contact resistance:	20m Ω (max)	
绝缘电阻/Insulation resistance:	500M Ω /500V	
耐电压/Withstanding voltage:	AC 2000V/1Min	
使用线径/Wire range:	14-30AWG, 2.5mm <sup>2</sup>	

### 机械性能/ Mechanical

扭矩/Torque:	0.4Nm(3.54Lb.in)
温度范围/Temperature range:	-40°C to +105°C
剥线长度/Steip length:	6-7mm
瞬间温度/Max soldering:	+250°C, for 5 Sec

### 尺寸/Dimensions

间距/Pitch:	5.0mm
极数/Poles:	2-24P

*N=Number of contacts*

慈溪万海电子有限公司  
CIXI WANHAI ELECTRONICS CO., LTD.

PART NAME: JM500B-5.0-XXP

TITLE:

PART NO.:

DWG NAME:

APPROVED BY

CHECKED BY

DESIGNED BY

DRAWN BY

CUSTOM NO.:

Tolerance

X ±0.50

X.X ±0.30

X.XX ±0.10

X° ±1°



UNITS:

SCALE: 2:1

REVISION: B3

1

2

3

4

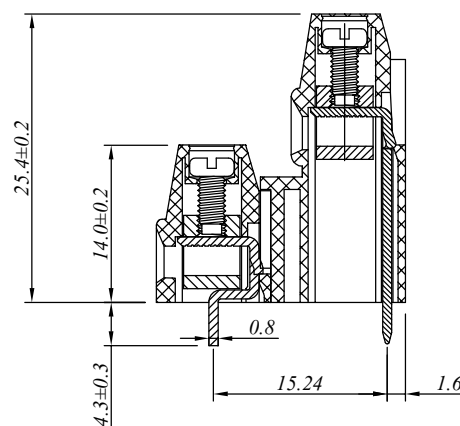
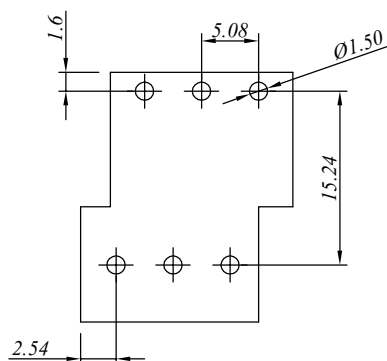
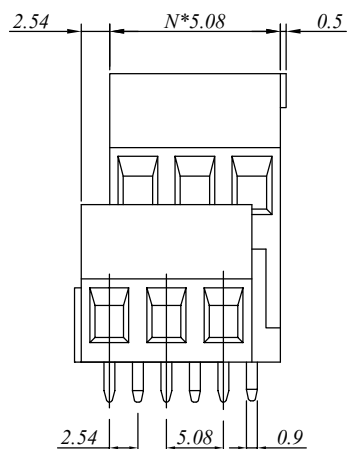
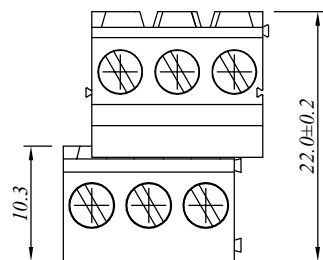
5

6

7

SIGN	DATE	DESCRIPTION	APPROVER

## P.C.B LAYOUT



### 材质于电镀/ Material

塑件/Insulator body:	PA66, UL94V-0
方块/Contact(metal housing):	Brass ,Ni plated
螺丝/Terminal screw:	M2.5, Steel Zn plated
焊脚/Pin header:	Brass, Tin plated

### 电器性能/ Electrical

参考标准/Standard:	UL	IEC
额定电压/Rated voltage:	300V	250V
额定电流/Rated current:	15A	18A
接触电阻/Contact resistance:	20m Ω (max)	
绝缘电阻/Insulation resistance:	500M Ω /500V	
耐电压/Withstanding voltage:	AC 2000V/1Min	
使用线径/Wire range:	14-30AWG, 2.5mm <sup>2</sup>	

### 机械性能/ Mechanical

扭矩/Torque:	0.4Nm(3.54Lb.in)
温度范围/Temperature range:	-40°C to +105°C
剥线长度/Steip length:	6-7mm
瞬间温度/Max soldering:	+250°C, for 5 Sec

### 尺寸/Dimensions

间距/Pitch:	5.08mm
极数/Poles:	2-24P

*N=Number of contacts*

## 慈溪万海电子有限公司 CIXI WANHAI ELECTRONICS CO., LTD.

PART NAME: JM500B-5.08-XXP

TITLE:

PART NO.:

DWG NAME:

APPROVED BY

CHECKED BY

DESIGNED BY

DRAWN BY

CUSTOM NO.:

Tolerance

X ±0.50

X.X ±0.30

X.XX ±0.10

X° ±1°



UNITS:

SCALE: 2:1

REVISION: B3