

1

2

3

4

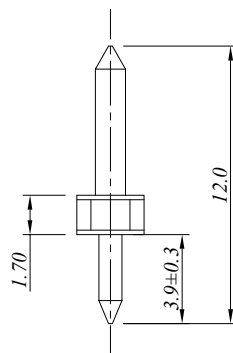
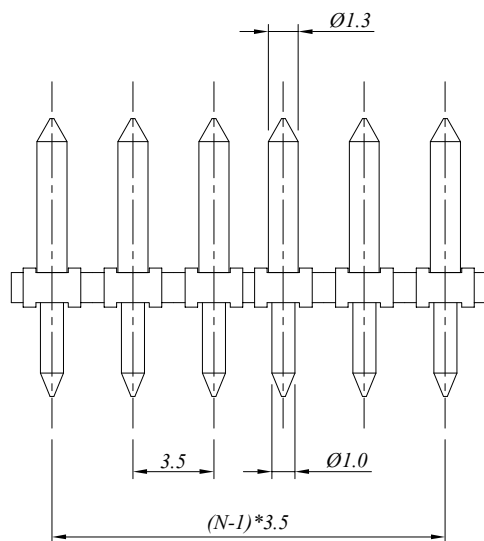
5

6

7

SIGN	DATE	DESCRIPTION	APPROVER
△			
△			
△			

## P.C.B. LAYOUT



### 材质于电镀/Material

塑件/Insulator body:

PBT, UL94V-0

焊针Pin header:

Brass, Tin plated

### 电器性能/Electrical

参考标准/Standard:

UL IEC

额定电压/Rated voltage:

300V 250V

额定电流/Rated current:

8A 10A

接触电阻/Contact resistance:

20m Ω (max)

绝缘电阻/Insulation resistance:

500M Ω /500V

耐电压/Withstanding voltage:

AC 2000V/1Min

### 机械性能/Mechanical

扭矩/Torque:

/

温度范围/Temperature range:

-40°C to +120°C

剥线长度/Steip length:

/

瞬间温度/Max soldering:

+250°C, for 5 Sec

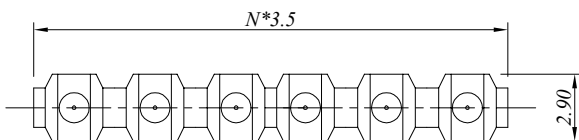
### 尺寸/Dimensions

间距/Pitch:

3.5mm

极数/Poles:

2-24P



*N=Number of contacts*

慈溪万海电子有限公司

**CIXI WANHAI ELECTRONICS CO., LTD.**

PART. NAME: JM333J-3.50-XXP

TITLE:

PART. NO.:

DWG NAME:

APPROVED BY

CHECKED BY

DESIGNED BY

DRAWN BY

CUSTOM NO.:

Tolerance

x. ±0.50

x.x ±0.30

x.xx ±0.10

xx° ±1°



UNITS: mm

SCALE: 2/1

REVISION: B2