

1

2

3

4

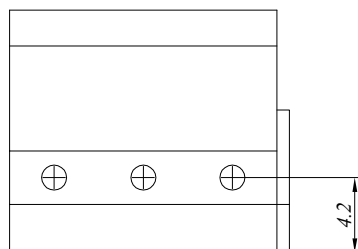
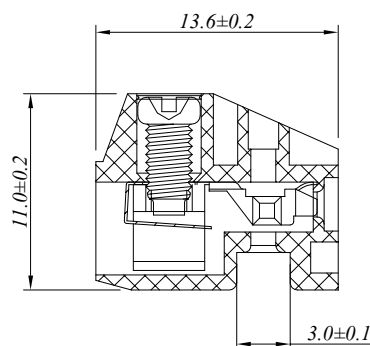
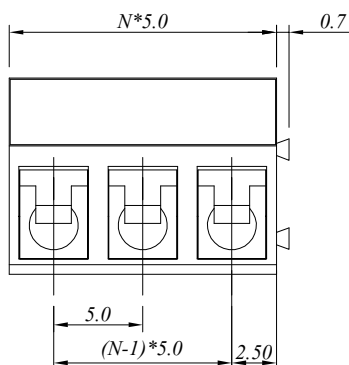
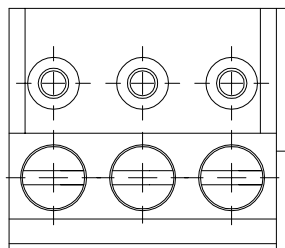
5

6

7

SIGN	DATE	DESCRIPTION	APPROVER
△			
△			
△			

P.C.B. LAYOUT



$N = \text{Number of contacts}$

材质于电镀/Material

塑件/Insulator body:
方块/Contact(metal housing):
螺丝/Terminal screw:
弹片/Wire guard:

PA66, UL94V-0
Brass, Ni plated
M2.5, Steel Zn plated
Stainless steel

电器性能/Electrical

参考标准/Standard:
额定电压/Rated voltage:
额定电流/Rated current:
接触电阻/Contact resistance:
绝缘电阻/Insulation resistance:
耐电压/Withstanding voltage:
使用线径/Wire range:

UL IEC
300V 250V
10A 17.5A
20m Ω (max)
500M Ω /500V
AC 2000V/1Min
16-28AWG, 1.5mm²

机械性能/Mechanical

扭矩/Torque:
温度范围/Temperature range:
剥线长度/Steip length:
瞬间温度/Max soldering:

0.4Nm(3.6Lb.in)
-40°C to +120°C
4.5-5mm
+250°C, for 5 Sec

尺寸/Dimensions

间距/Pitch: 5.0mm
极数/Poles: 2-24P

慈溪万海电子有限公司
CIXI WANHAI ELECTRONICS CO., LTD.

PART. NAME: JM332K-5.0

TITLE:

PART. NO.:

DWG NAME:

APPROVED BY

CHECKED BY

DESIGNED BY

DRAWN BY

CUSTOM NO.:

Tolerance

x. ±0.50

x.x ±0.30

x.xx ±0.10

xx° ±1°



UNITS: mm

SCALE: 3.125/1

REVISION: B4