

1

2

3

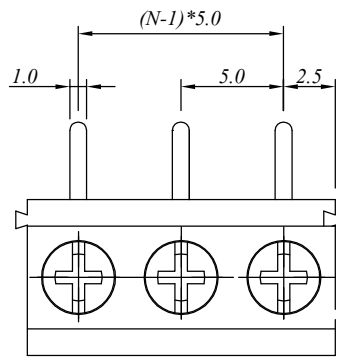
4

5

6

7

SIGN	DATE	DESCRIPTION	APPROVER
△			
△			
△			



P.C.B. LAYOUT

材质于电镀/Material

塑件/Insulator body: PA66, UL94V-0
 方针/Contact(metal housing): Brass, Tin plated
 螺丝/Terminal screw: M2.5, Steel Zn plated
 弹片/Wire guard: Stainless steel

电器性能/Electrical

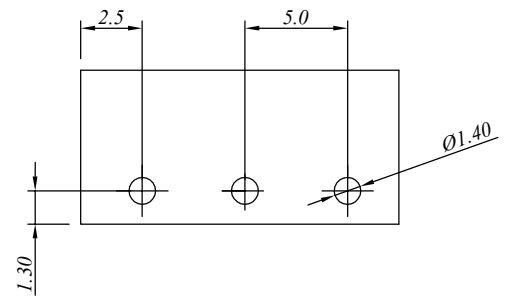
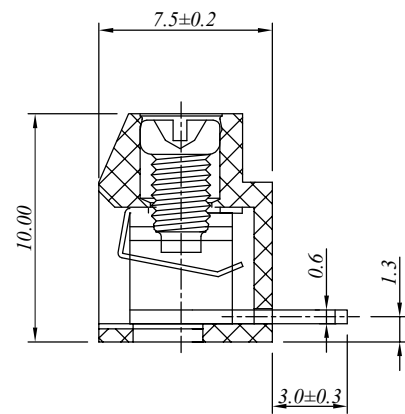
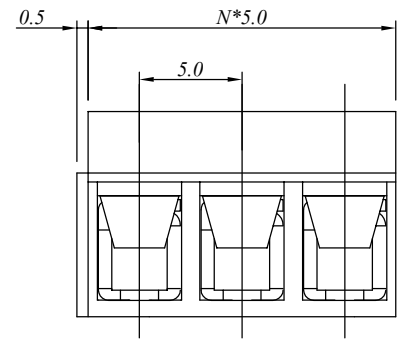
参考标准/Standard: UL IEC
 额定电压/Rated voltage: 300V 250V
 额定电流/Rated current: 8A 15A
 接触电阻/Contact resistance: 20m Ω (max)
 绝缘电阻/Insulation resistance: 500M Ω /500V
 耐电压/Withstanding voltage: AC 2000V/1Min
 使用线径/Wire range: 14-26AWG, 1.5mm²

机械性能/Mechanical

扭矩/Torque: 0.4Nm(3.6Lb.in)
 温度范围/Temperature range: -40°C to +120°C
 剥线长度/Steip length: 6-7mm
 瞬间温度/Max soldering: +250°C, for 5 Sec

尺寸/Dimensions

间距/Pitch: 5.0mm
 极数/Poles: 2-24P



N=Number of contacts

慈溪万海电子有限公司 CIXI WANHAI ELECTRONICS CO., LTD.

PART. NAME: JM126R-5.00-XXP				TITLE:											
PART. NO.:				DWG NAME:											
APPROVED BY	CHECKED BY	DESIGNED BY	DRAWN BY	CUSTOM NO.:	<table border="1"> <tr> <td>Tolerance</td> <td></td> </tr> <tr> <td>x.</td> <td>±0.50</td> </tr> <tr> <td>x.x</td> <td>±0.30</td> </tr> <tr> <td>x.xx</td> <td>±0.10</td> </tr> <tr> <td>xx°</td> <td>±1°</td> </tr> </table>	Tolerance		x.	±0.50	x.x	±0.30	x.xx	±0.10	xx°	±1°
Tolerance															
x.	±0.50														
x.x	±0.30														
x.xx	±0.10														
xx°	±1°														
				UNITS: mm											
				SCALE: 4/1											
				REVISION: B1											