

1

2

3

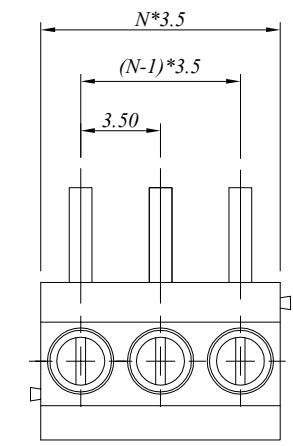
4

5

6

7

SIGN	DATE	DESCRIPTION	APPROVE



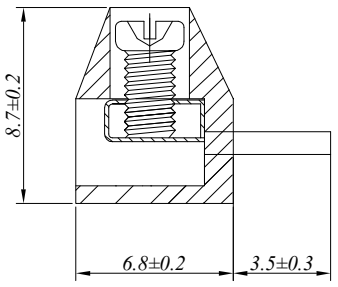
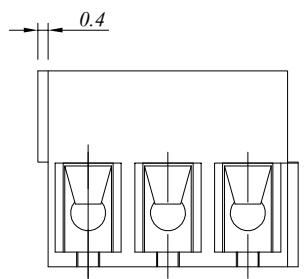
P.C.B. LAYOUT

材质于电镀/Material

塑件/Insulator body: PA66, UL94V-0
 方针/Contact(metal housing): Brass, Tin planted
 螺丝/Terminal screw: M2.0, Steel Zn planted
 弹片/Wire guard: Stainless steel

电器性能/Electrical

参考标准/Standard: UL IEC
 额定电压/Rated voltage: 300V 250V
 额定电流/Rated current: 10A 10A
 接触电阻/Contact resistance: 20m Ω (max)
 绝缘电阻/Insulation resistance: 500M Ω /500V
 耐电压/Withstanding voltage: AC 2000V/1Min
 使用线径/Wire range: 18-24AWG, 0.75mm²

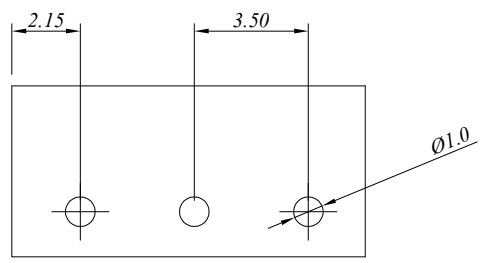


机械性能/Mechanical

扭矩/Torque: 0.2Nm(1.77Lb.in)
 温度范围/Temperature range: -40°C to +105°C
 剥线长度/Steip length: 4.5-5mm
 瞬间温度/Max soldering: +250°C, for 5 Sec

尺寸/Dimensions

间距/Pitch: 3.5mm
 极数/Poles: 2-24P



N=Number of contacts

慈溪万海电子有限公司 CIXI WANHAI ELECTRONICS CO., LTD.

PART. NAME: JM350R-3.50-XXP				TITLE:	
PART. NO.:				DWG NAME:	
APPROVED BY	CHECKED BY	DESIGNED BY	DRAWN BY	CUSTOM NO.:	Tolerance x. ±0.50 x.x ±0.30 x.xx ±0.10 xx ±1°
				UNITS: mm SCALE: 4/1 REVISION:A2	